

Cold 450T Slim Cooler



Compact footprint ideally suited to claim prime sites



Market Leading Energy Consumption: 2.67Kwh / 24 hrs

GreenSensePlus Features: Saving Energy and Reducing Lifetime Costs

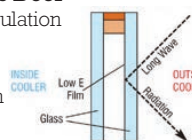
LED lighting

Longer lifetime and greatly reduced heat in the cabinet so less work for refrigeration unit



Low E Glass Door

Improves insulation U value and reduces condensation



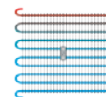
Electronic Control Fans

For accurate temperature display and controlled defrosting



R600a Refrigerant

More efficient. Zero ODP (Ozone Depletion) Negligible GWP (Global Warming Potential)



R a i s i n g s t a n d a r d s | R e d u c i n g c o s t s

Cold 450T Slim Cooler

Capacity Data:

Can 250ml (Red Bull)	294*	PET Bottle 250ml (Innocent Smoothie)	294*	Glass bottle 330ml (Corona)	210
Can 330ml (Coca-Cola)	300	PET Bottle 500ml (Coca-Cola)	150	Glass bottle 569ml (Bulmers)	100
Can 500ml (Heineken)	150	PET Bottle 500ml (Pepsi-Cola)	150	Tetra Pak 330ml (Vita Coco)	294*

*Requires 2 extra shelves



Danfoss controller with built in voltage protection



Sturdy door handle is bolted to door frame



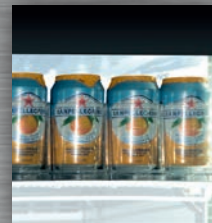
Compact EC fans take up less space and use only 3 Watts each



Rear is free from unsightly condenser grille



White metal interior with stainless steel supports



Gravity Feed shelving option easily configured

Cabinet Features

- Market Leading Energy Consumption of 2.67KwH / 24 hrs (AS1731 test standard – MEPS Approved)
- Double glazed door with Low E glass, less prone to condensation (Triple Glazed for Australian version)
- Powerful German EC technology fans from brand leader EBM are 70% more efficient and offer double the lifetime compared with other versions
- Low maintenance anti-blockage condenser with EC fan assistance
- Suitable for dairy products and sandwiches
- LED lighting, full length for optimum display
- Compact evaporator fans do not impinge on top shelf display space.
- Self-closing door
- Easy to adjust shelves with finely spaced support system (5 supplied as standard)

External Dimensions (mm)	
Height	1855mm
Width	450
Depth with rear spacer	715
Depth including handle protrusion	747

Internal Dimensions (mm)	
Height	1445mm
Width	365
Depth	525

Container loading	
20 foot	34
40 foot	70

Specifications	
Climate Class	3 (25C 60% RH)
Gross Weight	95Kg (with all packing material)
Net Weight	82Kg
Noise level in Db	50Db
Capacity	300 litres
Voltage	220-240 volts
Hertz	50 Hertz
Rated Power	260 Watts
Running Current	1.5 Amps
Refrigerant	R600a
Insulation Foam	Injected PU foam blown with Cyclopentane



Choose **GreenSensePlus** to improve energy efficiency and reduce lifetime costs. To find out why being environmentally conscious is also good for the cost conscious, please visit

www.greensenseplus.com



In the interests of continuous product development specifications may be changed without notice.

Staycold Export Ltd

9 Hunters Walk, Canal Street, Chester, CH1 4EB, United Kingdom

telephone: +44 1244 321320

www.staycold.co.uk | email: sales@staycold.co.uk